



CADEAU BAG

LEARN TO SEW FRENCH SEAMS

A LEARNING pattern for beginner sewers



© Pattern Orchard 2017

www.patternorchard.com

#POcadeaubag

#POlearners

#PatternOrchard

The CADEAU BAG pattern

Learn to sew French seams

This pattern has been designed to teach a sewing skill.

The instructions are more detailed than a traditional pattern to better guide you through sewing your first French seams.

As you progress through the pattern, the shape and construction method of the bag introduces you to sewing French seams along 3 different types of straight edges.

About the design

Why Cadeau? The French word for 'gift' is 'Cadeau'.

Gift bag > Cadeau Bag!

The pattern pieces are sized to make the most from half a metre
The seam allowance for this pattern (how far in from the raw edge your stitching needs to be) is 1cm.

Use a medium length stitch (3-3.5)

Table of contents

Fabric guide [page 3](#)

About French seams [page 4](#)

Sewing instructions [pages 5-12](#)

Printing instructions are on [page 13](#)

Pattern pieces to print [pages 14-19](#)



FABRIC

TYPE

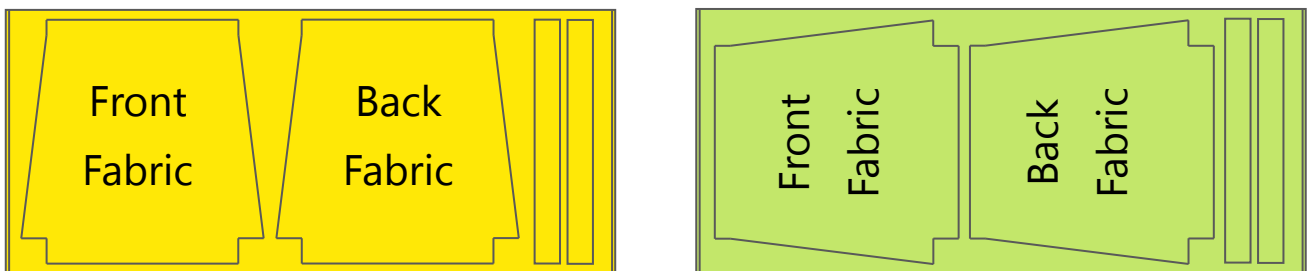
For the Cadeau Bag, a heavier woven (non stretchy) fabric is recommended. Such as; Linen, canvas, duck, drill, denim.

However, a lighter woven fabrics like quilting cotton or poplin can be used. The finished bag will not be as durable though.

Avoid fabrics that fray easily or have a high pile such as muslin, terry towelling, corduroy, velvet, flannelette.

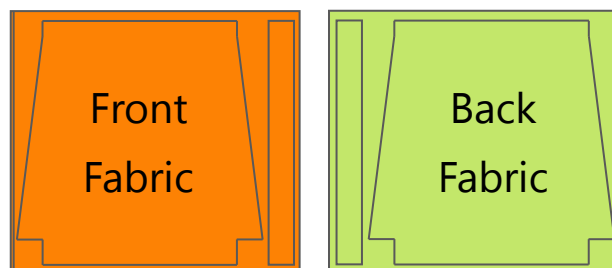
QUANTITY

Half a metre (50cm) off the bolt (roll) is needed to make the whole bag. Total fabric size 50x110cm.



If using a fabric that is narrower, you may need more.

If using pre-cut Fat Quarters (FQ's 48x52cm), 2x FQ's are needed.



Get creative and make the front & back from different fabrics.

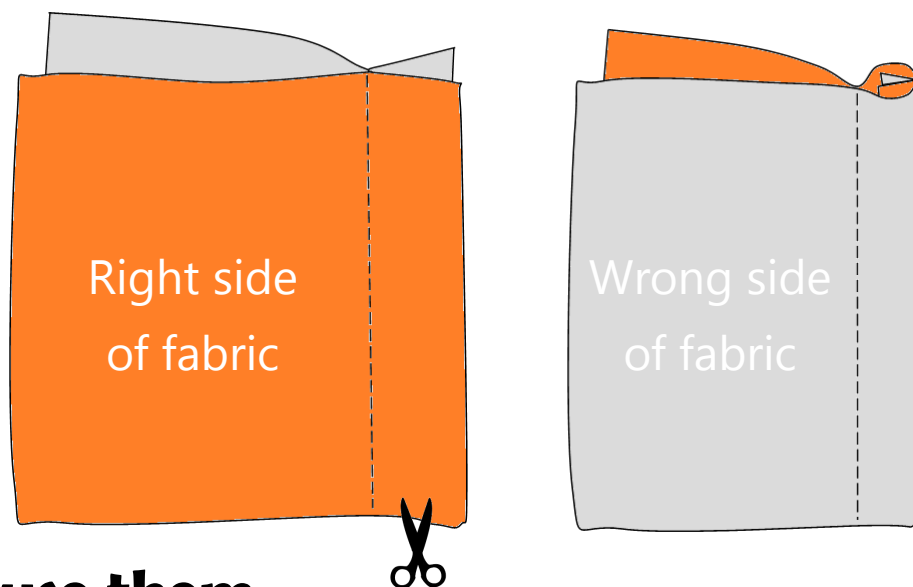
Add an applique or pocket to the front of your Cadeau bag.

French Seams

While the exact origin of this seam type is not well defined, today it is commonly called a French seam when this method is used. A French seam can be used on most woven or sheer fabrics from organza to canvas. It can be used on straight or curved edges. Before the invention of overlockers, the French seam method was very frequently used.

Structure

The raw edges of fabric are enclosed inside a French seam by first sewing the edge of 2 (or more) layers with wrong sides together, then trimming, pressing, turning right sides together, before the seam is sewn again to hide the first line of stitching. We will go through these steps in detail on the next few pages.



When to use them

French seams are easiest to achieve on straight edges. Sewing a French seam along fabric that is cut at an angle or on a curve takes a little more practice, but it can be done.

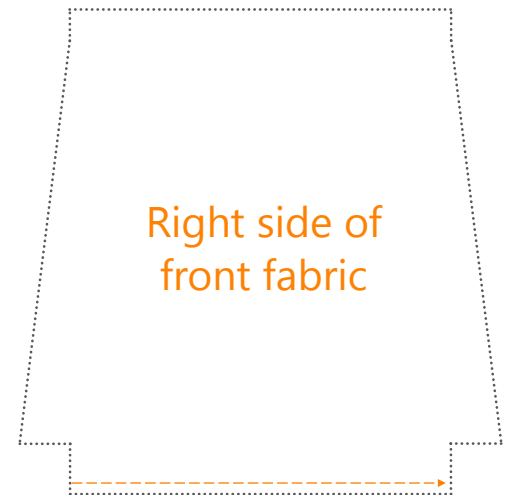
SEWING INSTRUCTIONS

STEP 1 : Your first French seam!

To start, the bottom edge of the bag is sewn together with a French seam. After sewing the first seam, you will repeat steps a,b,c to sew the next 4 French seams.

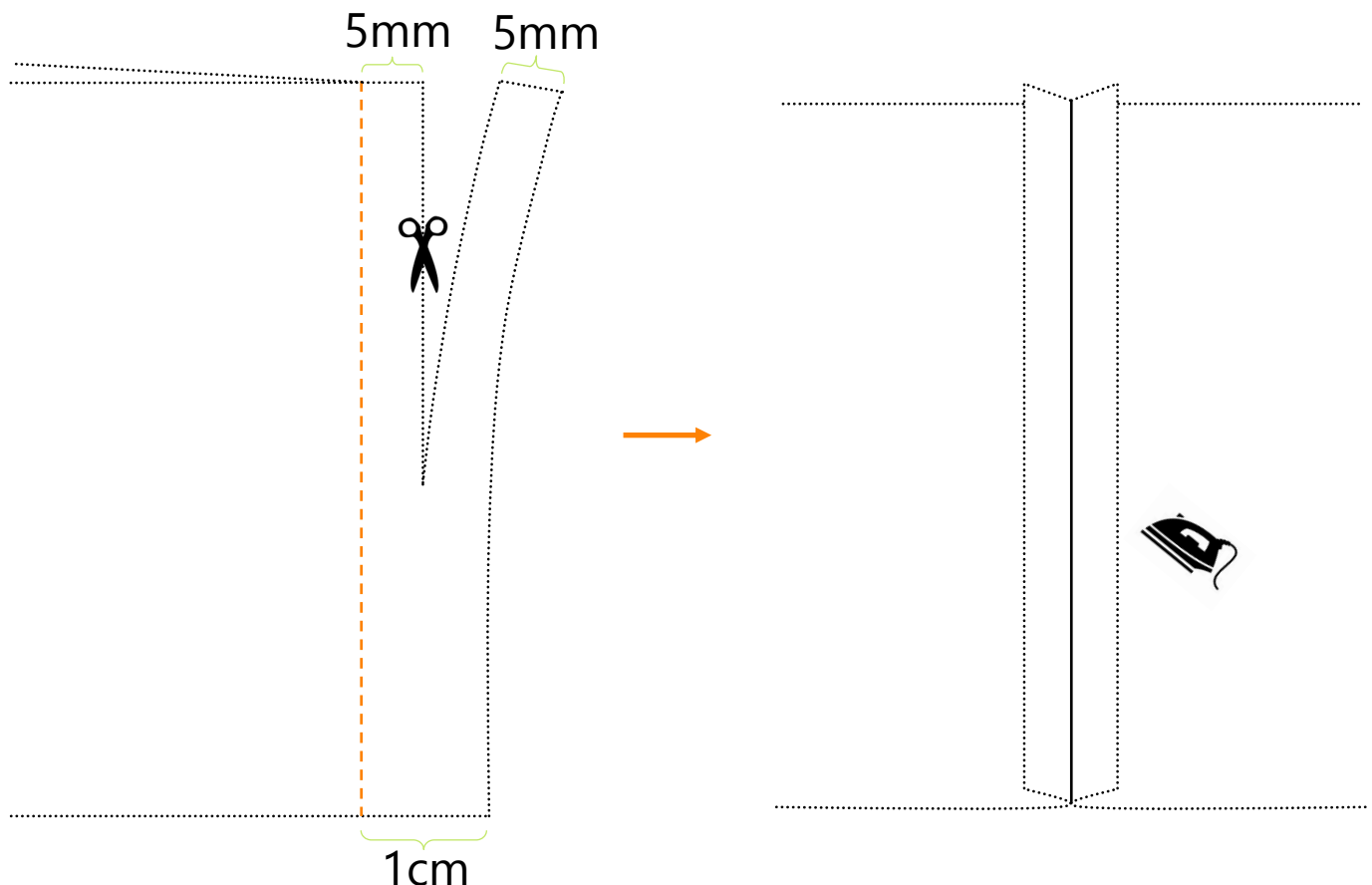
(a) SEW: Place the 2 fabrics wrong sides together (back to back).

Sew along the bottom edge of the bag at 1cm from the bottom raw edge of the fabric.



(b) TRIM & PRESS: Cut off half of the seam allowance.

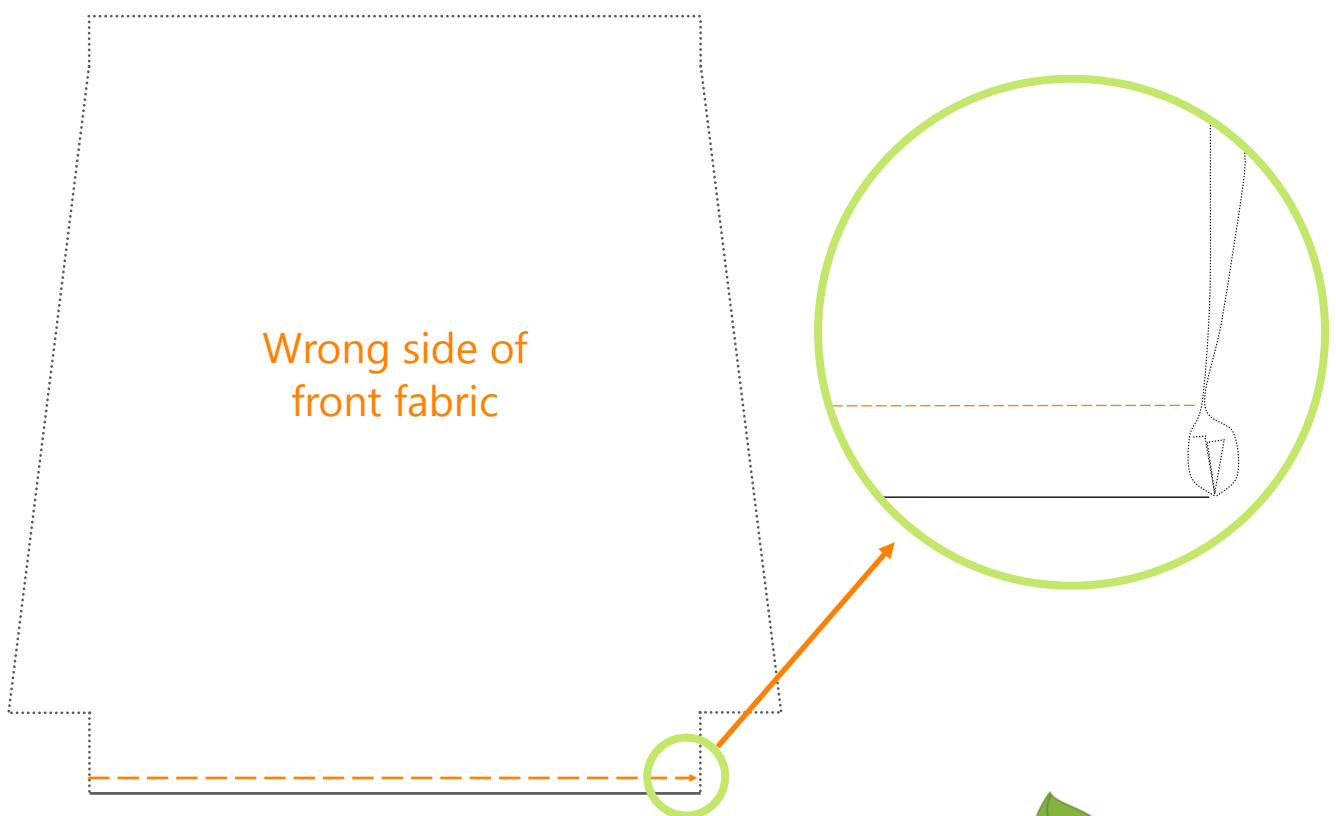
Then iron the seam open down the middle.



STEP 1 : (c) FLIP, PRESS & SEW: Fold the seam the opposite way so that the fabric is now right sides together and press with the iron again.

The raw edges should be inside the bag now with the wrong sides of the bag fabric visible.

Sew along the bottom edge 1cm in from the fold.

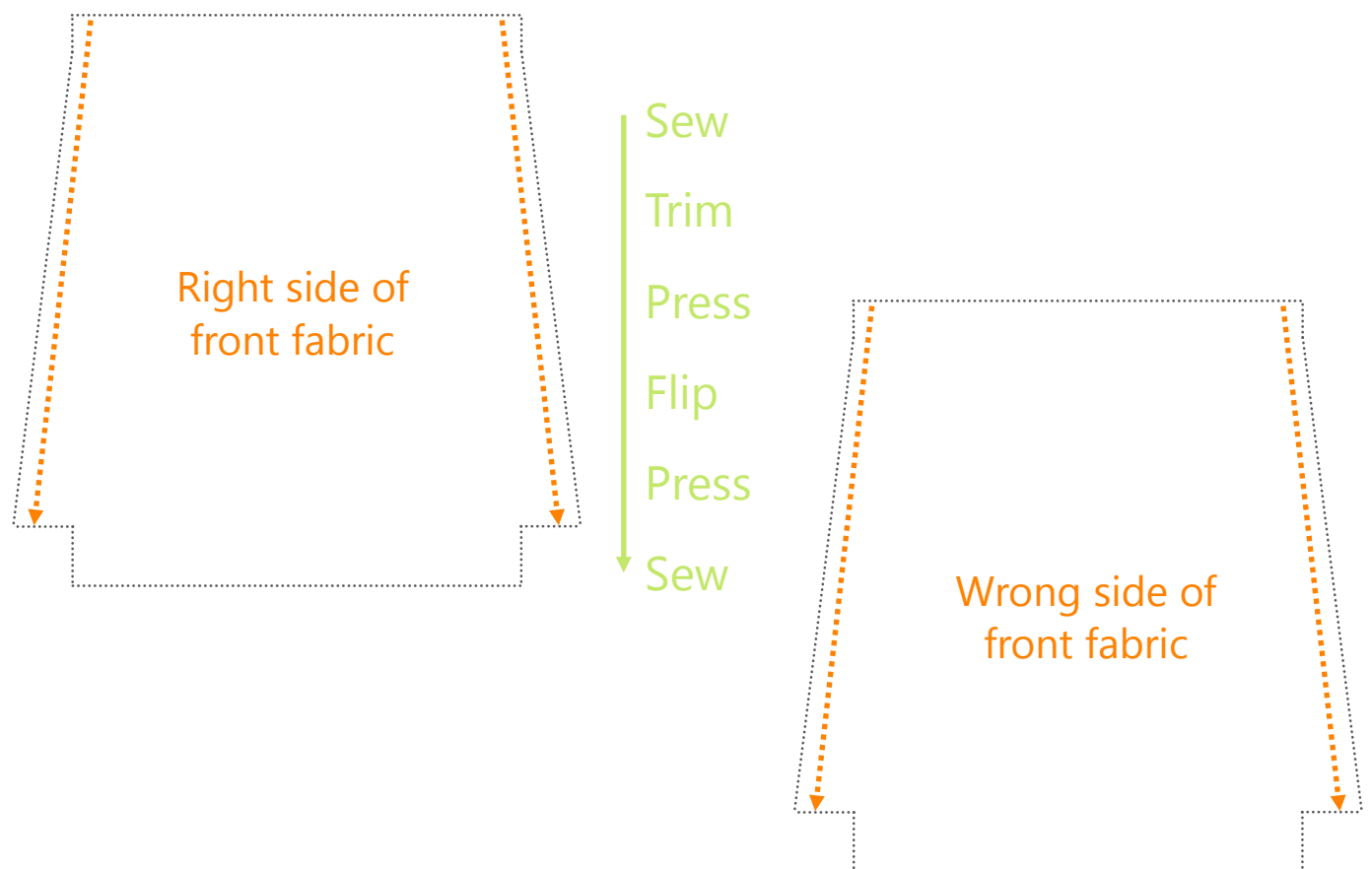


This line of stitching will encase the raw edge inside.

Turn out the right way and check the raw edge is not visible on the right side of the bag fabric. If there is any fraying fabric peeking through the seam, carefully trim it off.



STEP 2: This edge is a little different to the first one you sewed, it is cut on a light angle which means the edge is a little more likely to fray or move around as you sew. You can do this! Repeat the same process from step 1 (a,b,c) to sew a French seam along each of the side seams of the bag.



Your bag should now have 3 complete French seams sewn.

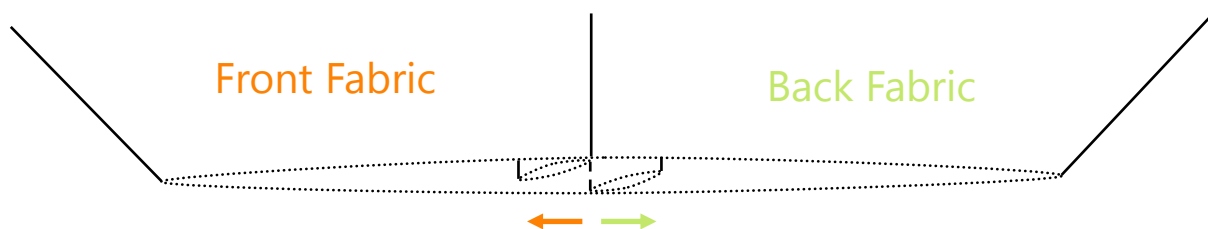
Across the bottom and down both sides.

There will be a square hole at the bottom on each side and the top edge is still raw.



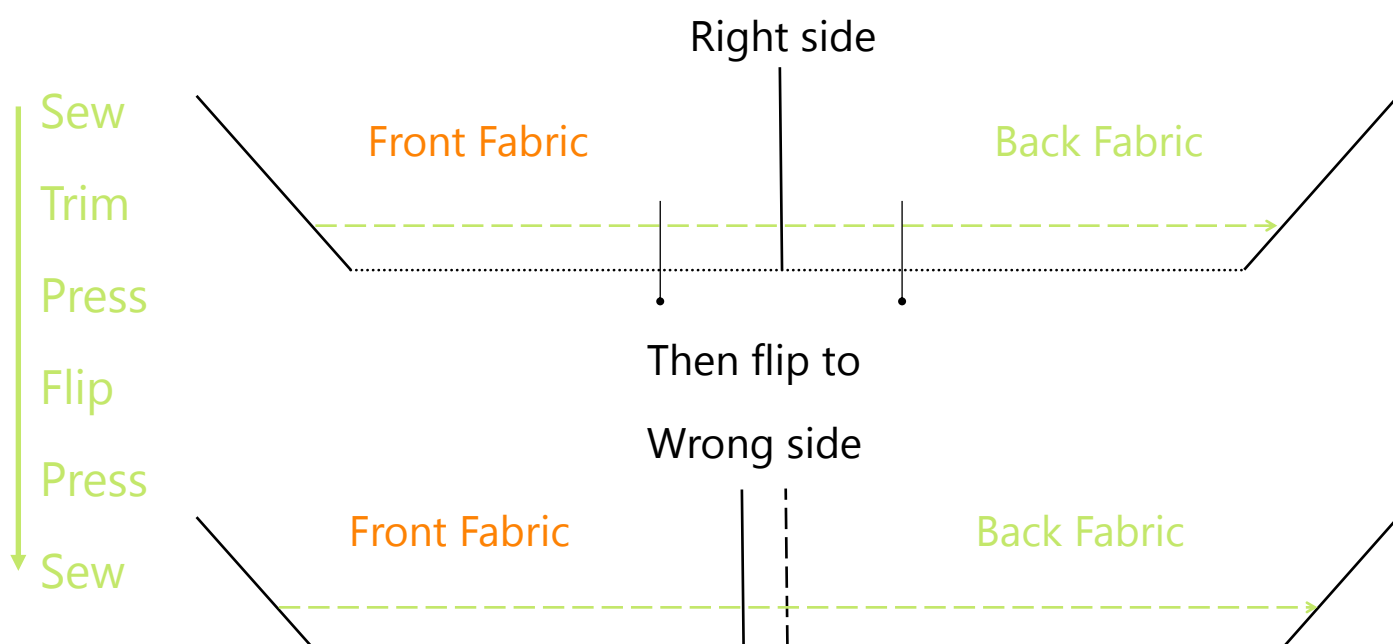
STEP 3: To sew the bottom corners closed, you need to start by getting the side seam and bottom seam lined up together.

Looking at the outside of the bag (the right side), you should see the fabric of both sides of the bag, with the seam up the middle.



Inside, lay the bulk of the French seams towards opposite sides. This distributes the bulk of the 2 seams so that it is not too thick to sew through.

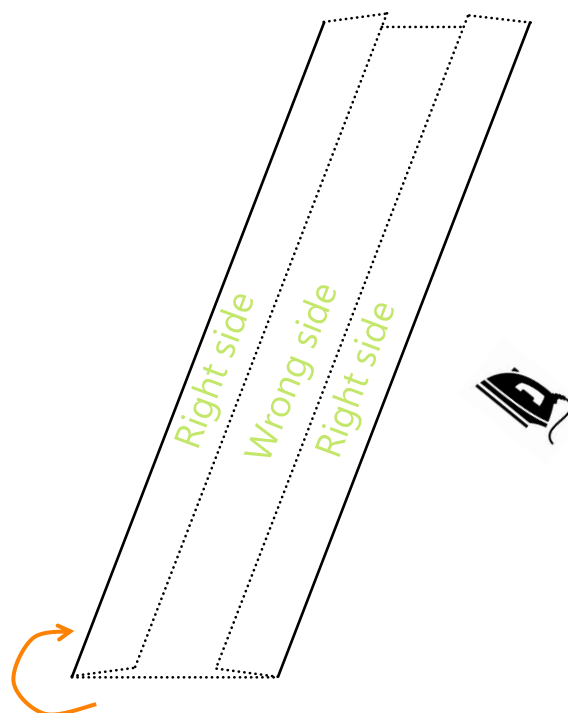
Place a pin either side of the seam, then sew the French seam as per the process outlined in Step 1 (a,b,c).



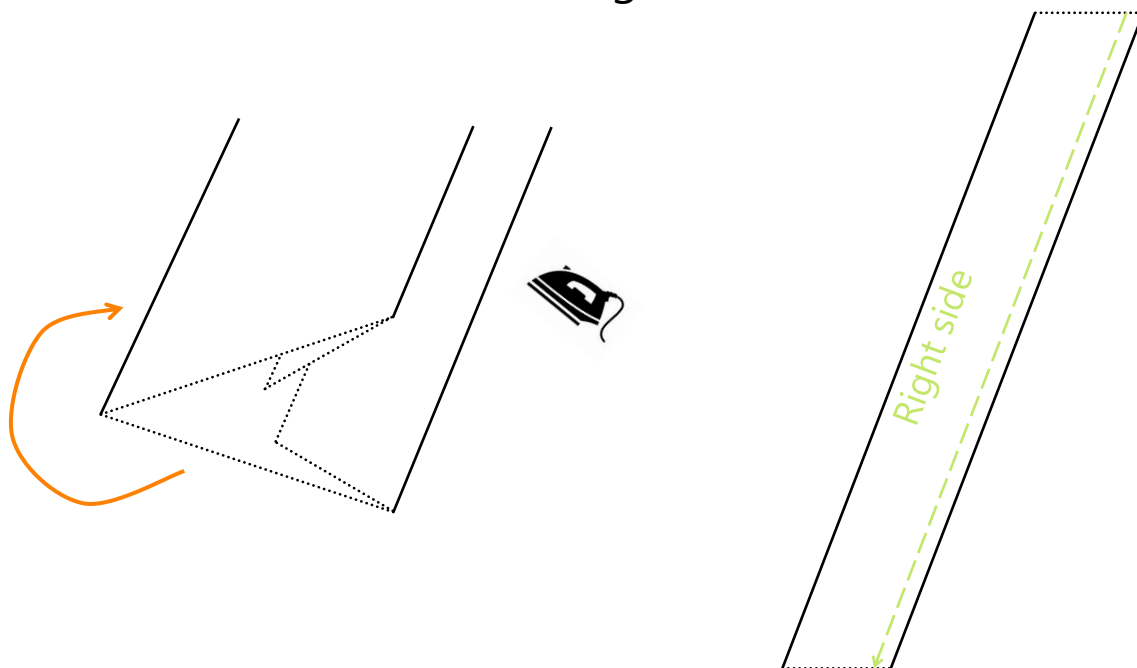
Repeat on the second bottom corner so your bag can now hold things without them falling out!

STEP 4: Prepare your bag straps.

Fold and press both long sides in by 7mm.

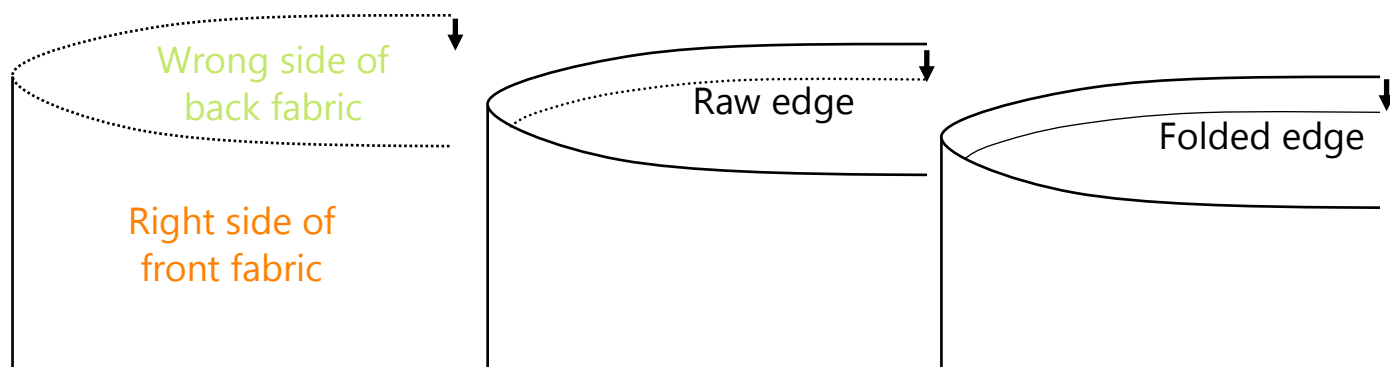


Fold the strap in half lengthways and press so that you can now only see the right side of your fabric. Sew down the open folded side about 2-3mm in from the edge.



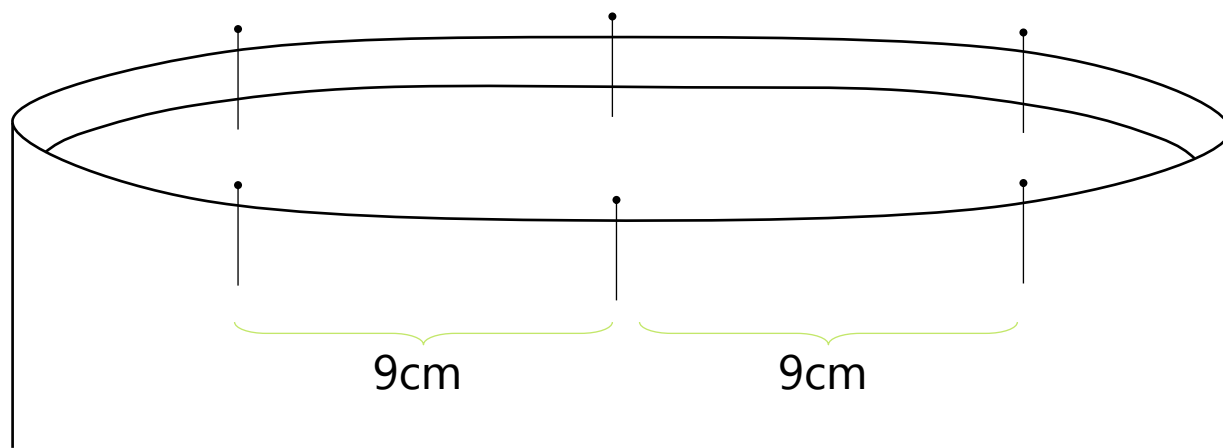
Repeat with your second strap fabric.

STEP 5: Fold the top raw edge of the bag down by 1cm so that the raw edge is now inside the top of the bag. Press with iron. Fold down again by 1cm in the same direction. Press with iron. The raw edge should now be hidden inside the folded top edge.

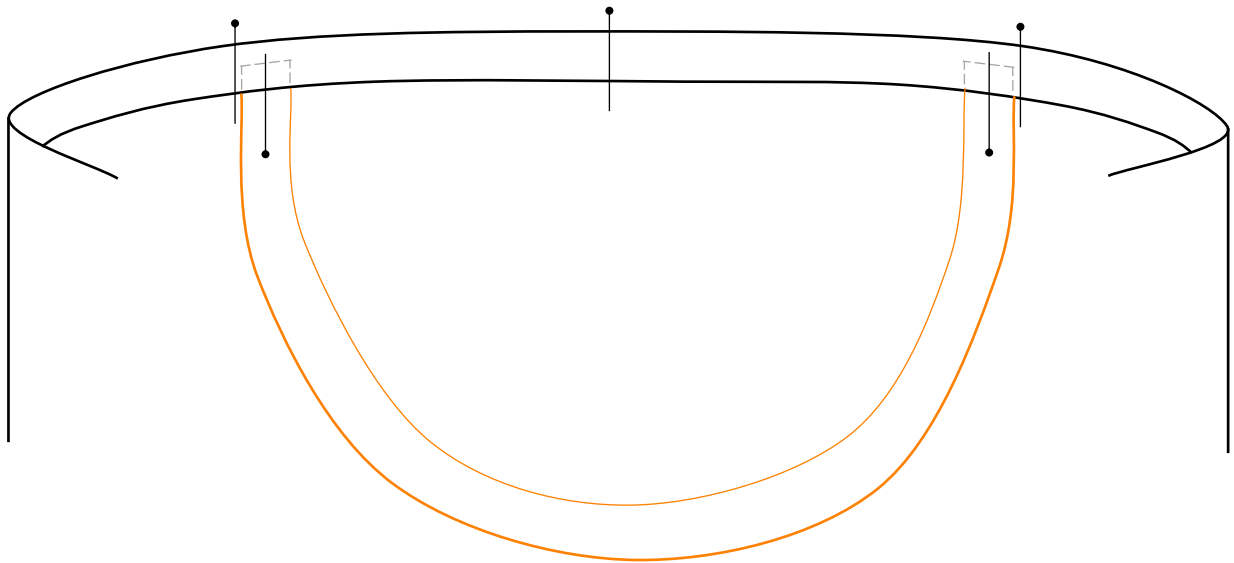


STEP 6: Align the two side seams of the bag to locate the centre at the top folded edge. Place a pin in the centre.

Measure 9cm to either side of the centre pin and mark with another pin. You should have a centre pin and 2 side pins on the front. The same on the back.

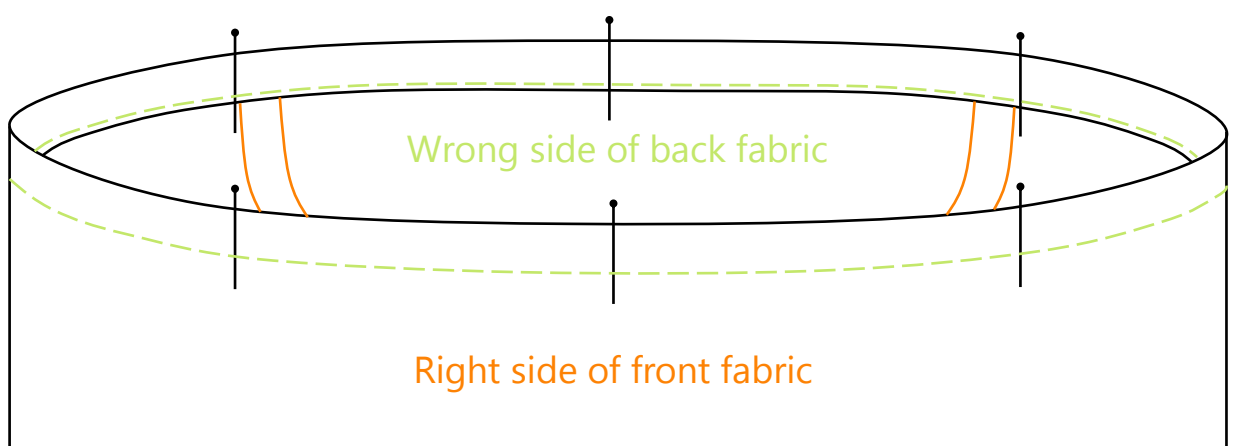


STEP 7: Place the two raw ends of the straps underneath the inside folded edge so that the raw end sits 5mm under the folded top fabric and against the side of the outer pins.



Place both straps in position (pin to secure), one on the front fabric and the other on the back fabric, both on the inside of the bag.

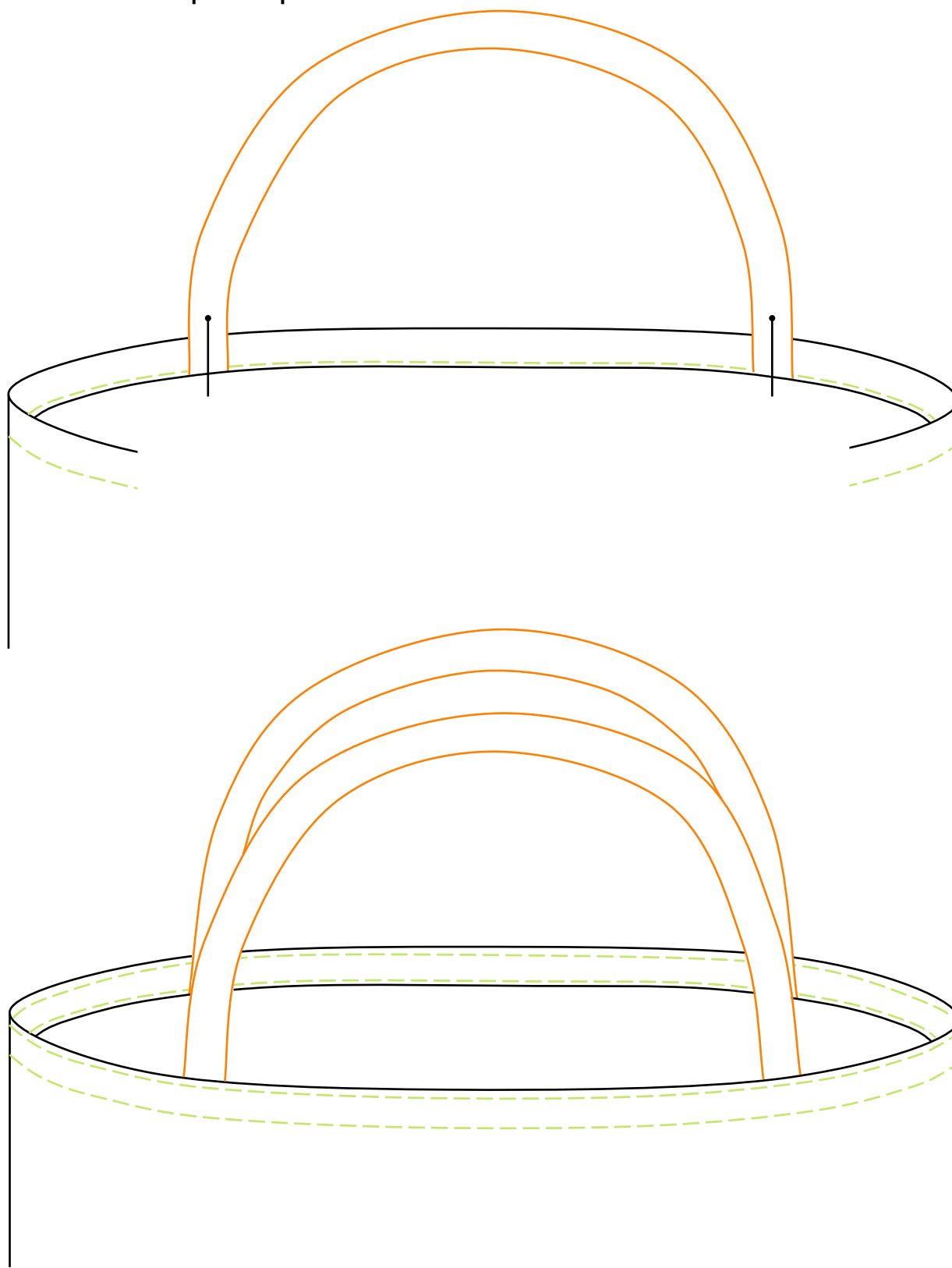
STEP 8: Sew around the bottom of the folded over fabric edge.



This stitching holds the folded edge down and the ends of the straps in place with all raw edges hidden.

STEP 9: Fold the straps upward and pin.

Sew around the top of the bag 2-3mm from the top edge, to secure the straps in place.



Congratulations! Your French seamed Cadeau Bag is Finished!

Printing

Print only page 14 first. Using a metric ruler, check that the printed ruler picture on page 14 accurately measures 12cm.

If this is not accurate to within 1mm, your page has not printed to scale and you will need to troubleshoot the issue with your printer. Find out more about printing to scale on the Pattern Orchard website at www.patternorchard.com

Once page 14 has printed to scale, print pages 15-19.

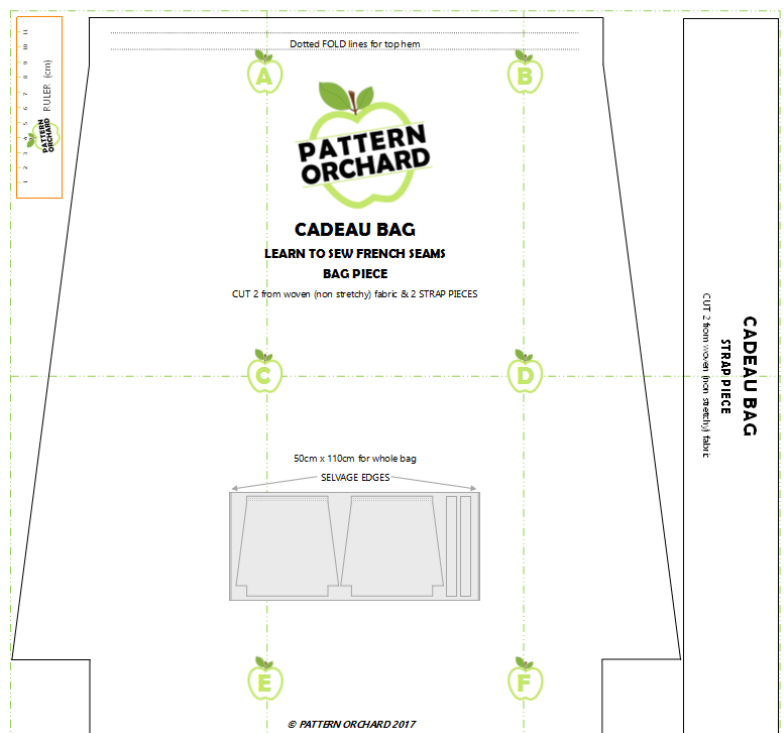
Each page has a double dot dashed border around it. 

Cut along this border line on all 6 pages.

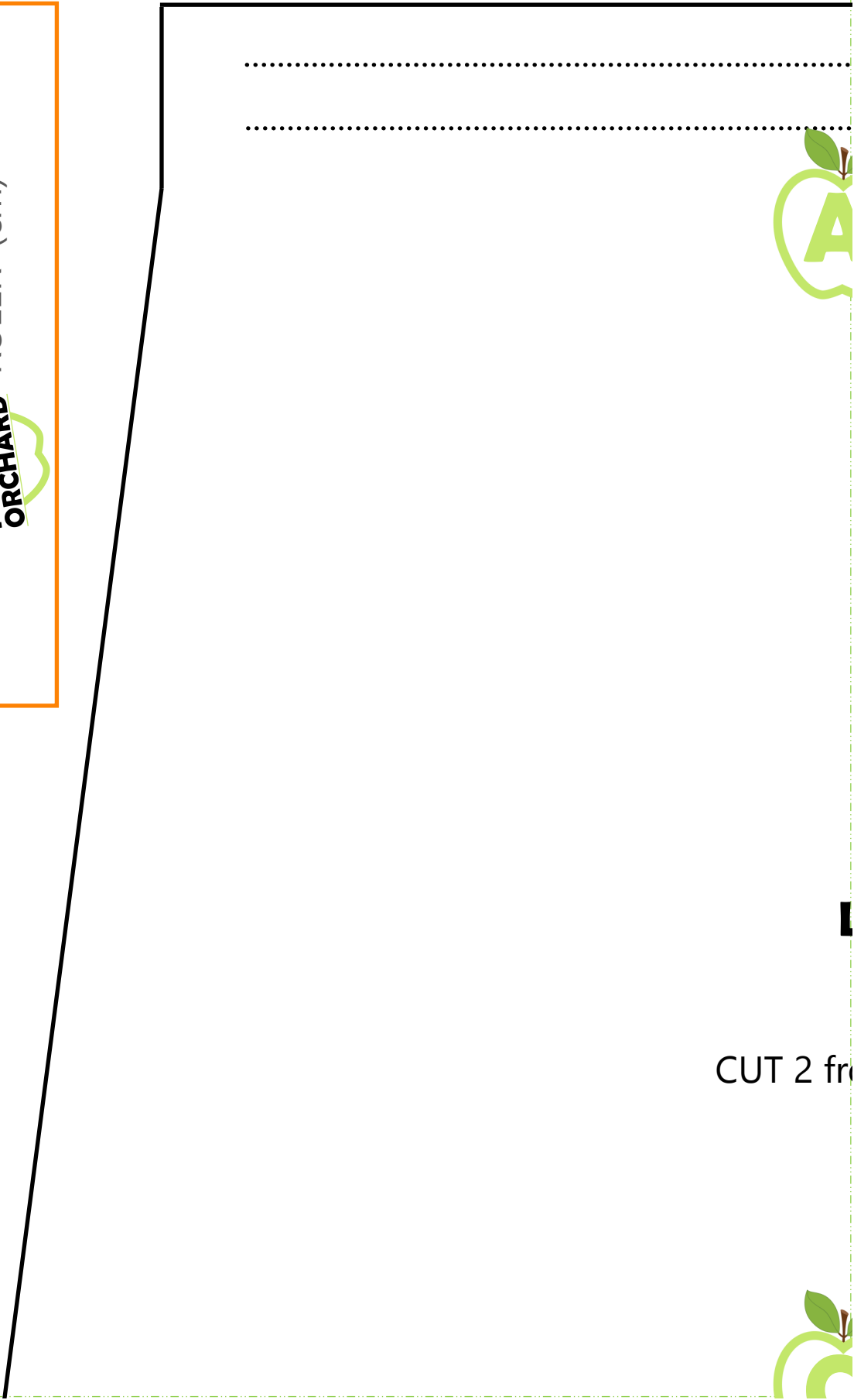
Align the 6 rectangles using the apples as a guide.

Sticky tape along the edges.

Now the pattern is assembled, cut out the 2 pattern pieces along the solid black lines.



If a page gets damaged, you can print it again.



CUT 2 fr



Dotted FOLD lines for top hem



**PATTERN
ORCHARD**

CADEAU BAG

LEARN TO SEW FRENCH SEAMS

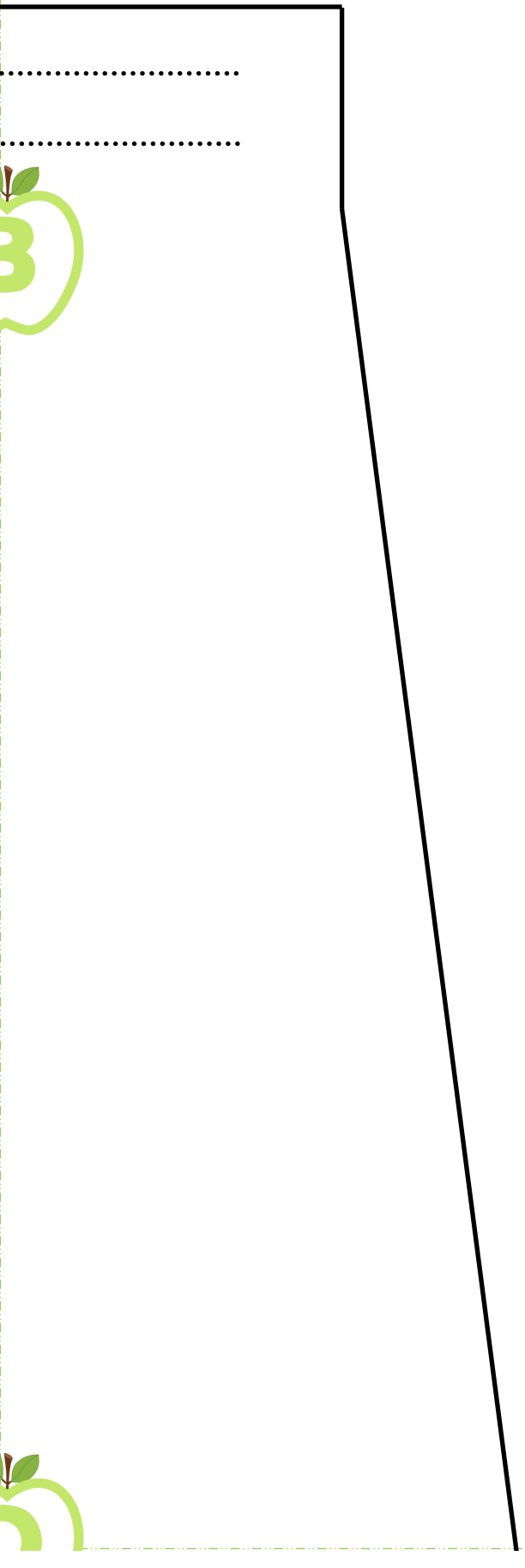
BAG PIECE

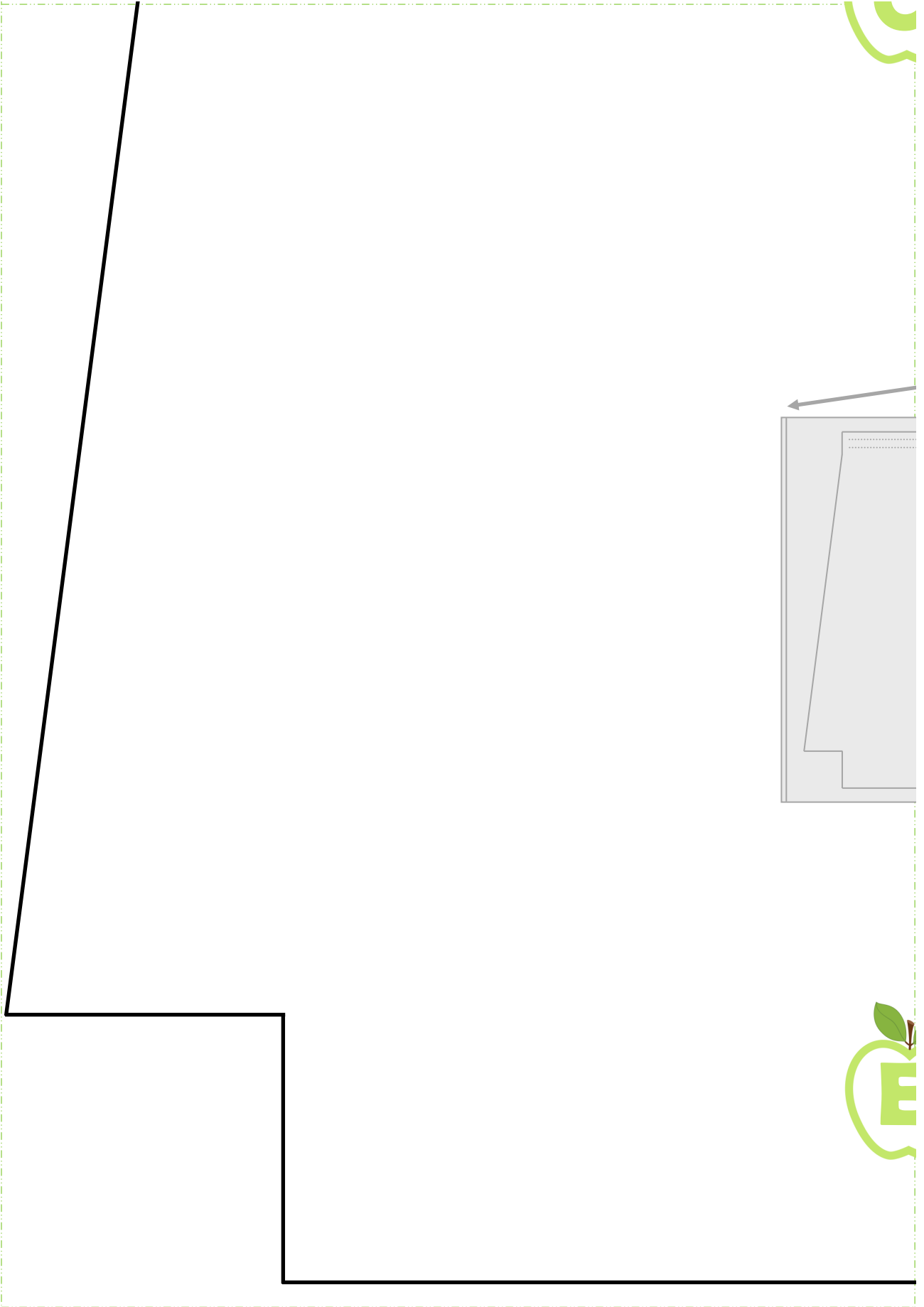
om woven (non stretchy) fabric & 2 STRAP PIECES

CADDEA

STRAP

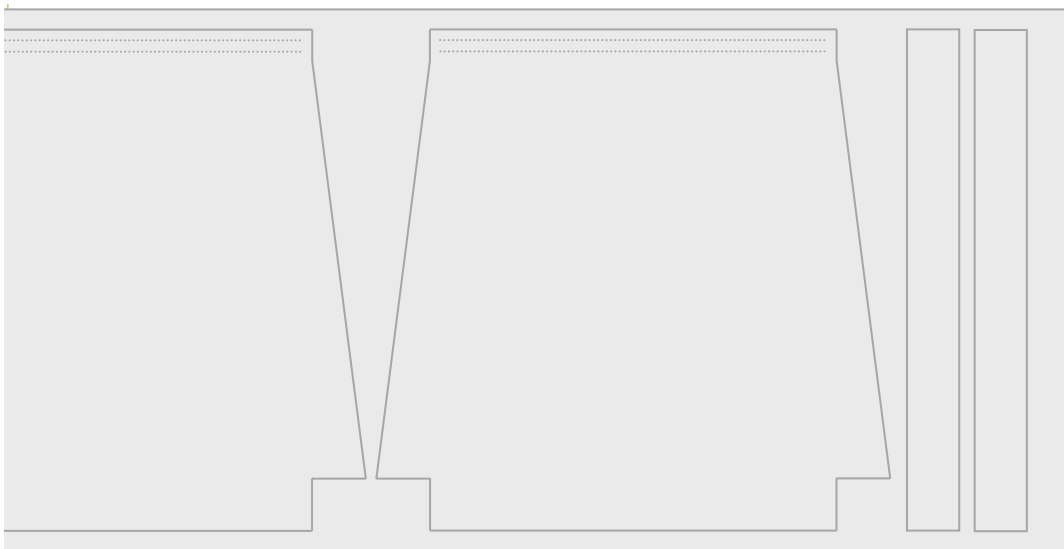
CUT 2 from woven (





50cm x 110cm for whole bag

SELVAGE EDGES



Finished size 30cm wide x 9.5cm deep x 38cm high
+ handles

© **PATTERN ORCHARD 2017**

U BAG

PIECE

(non stretchy) fabric

